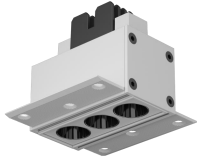


DG6735R-6 Datasheet

Features



- Comfortable visual UGR<13 via shielding angle>40°
- Modular design lighting source,easy to maintain.
- Uniform lighting distribution.
- High-quality housing and finish.
- Honeycomb optic available,black or white reflector optional.

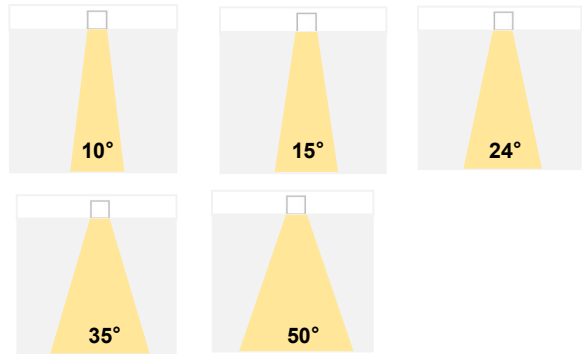


General

- Indoor
- Die-casting aluminum
- Trimless recessed
- Housing color:White
- Power coated
- Reflector color: black or white option
- Modular lighting source

Optic

- Shielding angle: 40°
- Beam Angle: 10° /15° /24° /35° /50°
- UGR<13



Electrical

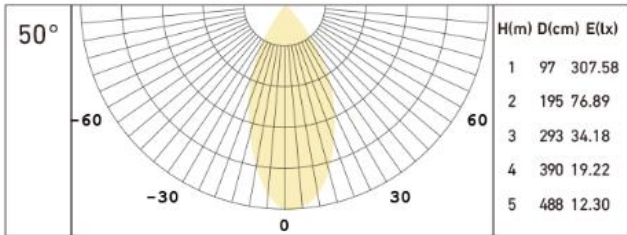
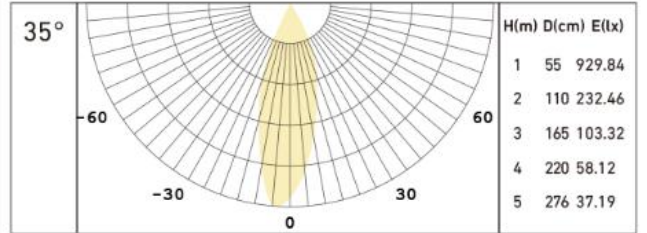
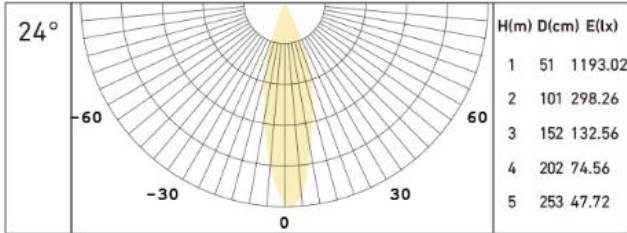
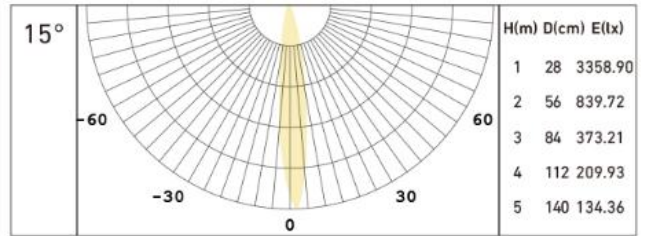
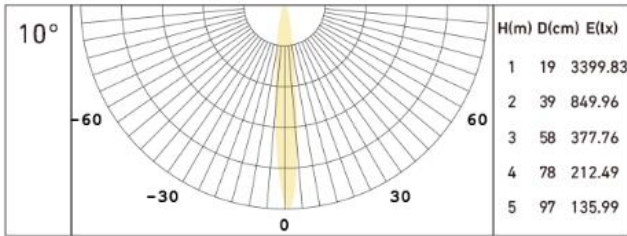
- Class II EU
- Driver type: constant current
- Input: 220-240VAC, 50Hz
- Power: 6W
- On-off/0-10V/Dali
- PF: 0.5

Photometric

- LED brand: Bridgelux
- SDCM <3
- CRI 90
- CCT: 2700K/3000K/3500K/4000K/5000K
- Lumen@3000K, 24°
- 10°=124lm,
- 15°=132lm,
- 24°=155lm,
- 35°=186lm,
- 50°=169lm

DG6735R-6 Datasheet

Light distribution



Dimension

- Size:L65*W70*H58
- Cutout: 67*35mm

