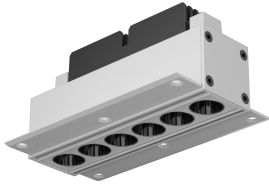


DG12435R-12 Datasheet

Features



- Comfortable visual UGR<13 via shielding angle>40°
- Modular design lighting source,easy to maintain.
- Smooth lighting distribution.
- High-quality housing and finish.
- Honeycomb optic available,white or black reflector color options.

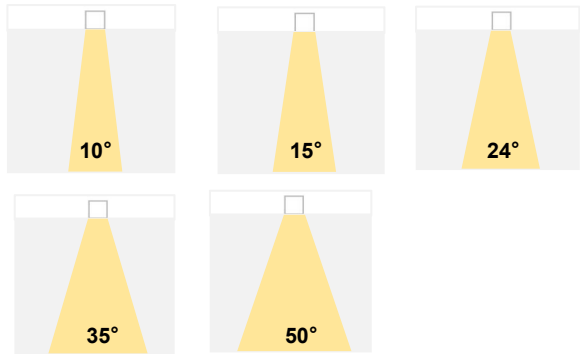


General

- Indoor
- Die-casting aluminum
- Trimless recessed
- Housing color:White
- Power coated
- Reflector color: black or white option
- Modular lighting source

Optic

- Shielding angle: 40°
- Beam Angle: 10° /15° /24° /35° /50°
- UGR<13



Electrical

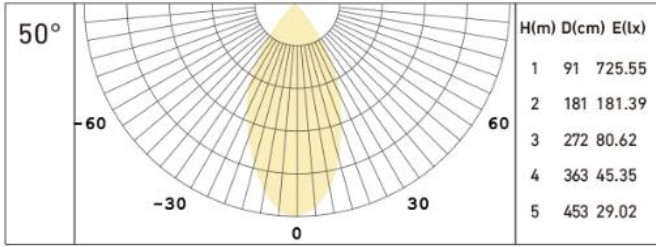
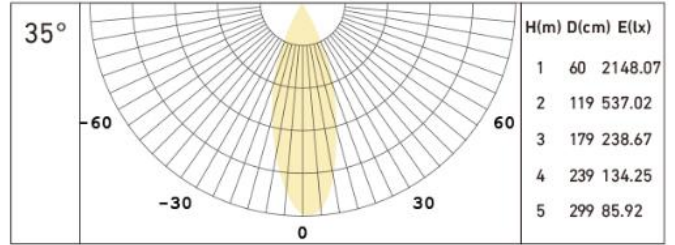
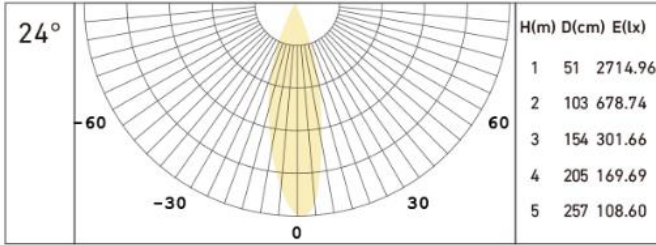
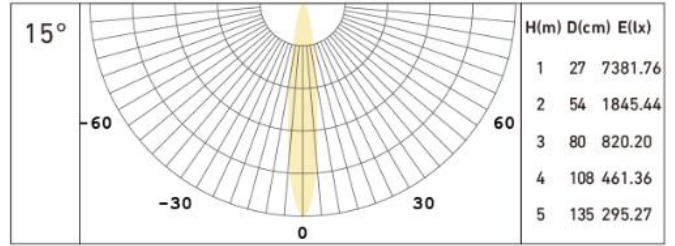
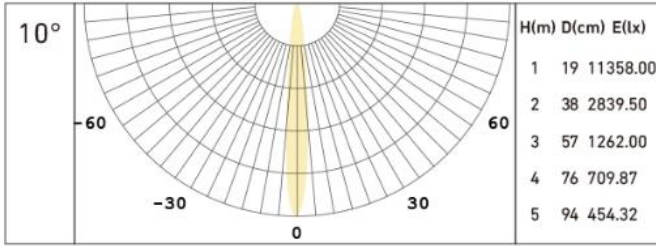
- Class II EU
- Driver type: constant current
- Input: 220-240VAC, 50Hz
- Power: 12W
- On-off/0-10V/Dali
- PF: 0.5

Photometric

- LED brand: Bridgelux
- SDCM <3
- CRI 90
- CCT: 2700K/3000K/3500K/4000K/5000K
- Lumen@3000K, 24°
- 10°=624lm,
- 15°=663lm,
- 24°=780lm,
- 35°=936lm,
- 50°=850lm.

DG12435R-12 Datasheet

Light distribution



Dimension

- Size:L122*W70*H58
- Cutout: 124*35mm

